

Mariner: 4 Bedroom, 4.5 Baths, 3 Stories

Reverse Floor Plan w/ Kitchen and Living Area on 2nd Level

Level 1 Square footage:

1428 Conditioned Area

696 Porches

Level 2 Square Footage

1161 Conditioned Area

432 Porches

Level 3 Square Footage

317 Conditioned Area

Total Conditioned Area: 2906

Total Porches: 1128

Total: 4034

Architect: T. S. Adams Studio



Michael McKelvie Homes, LLC

174 WaterColor Way Suite 333
Santa Rosa Beach, FL 32459

Phone: (850) 699-6429

www.michaelmckelviehomes.com
Info@michaelmckelviehomes.com

Efax: (866) 424-9032

*Specializing in Spectacular
Custom Homes*

Mariner: 4 Bedroom, 4.5 Baths, 3 Stories

First Floor Dimensions:

Master Bedroom: 15' 4" x 17' 8"

Middle Bedroom: 11' 8" x 12' 6"

Front Bedroom: 10' 9" x 12' 6"

Second Floor Dimensions:

Front Bedroom: 17' x 12' 6"

Kitchen: 18' 9" x 12' 7"

Great Room: 17' x 18' 3"

Dining Room: 10' 6" x 12' 7"

Third Floor Dimensions:

Loft: 17' x 12' 6"

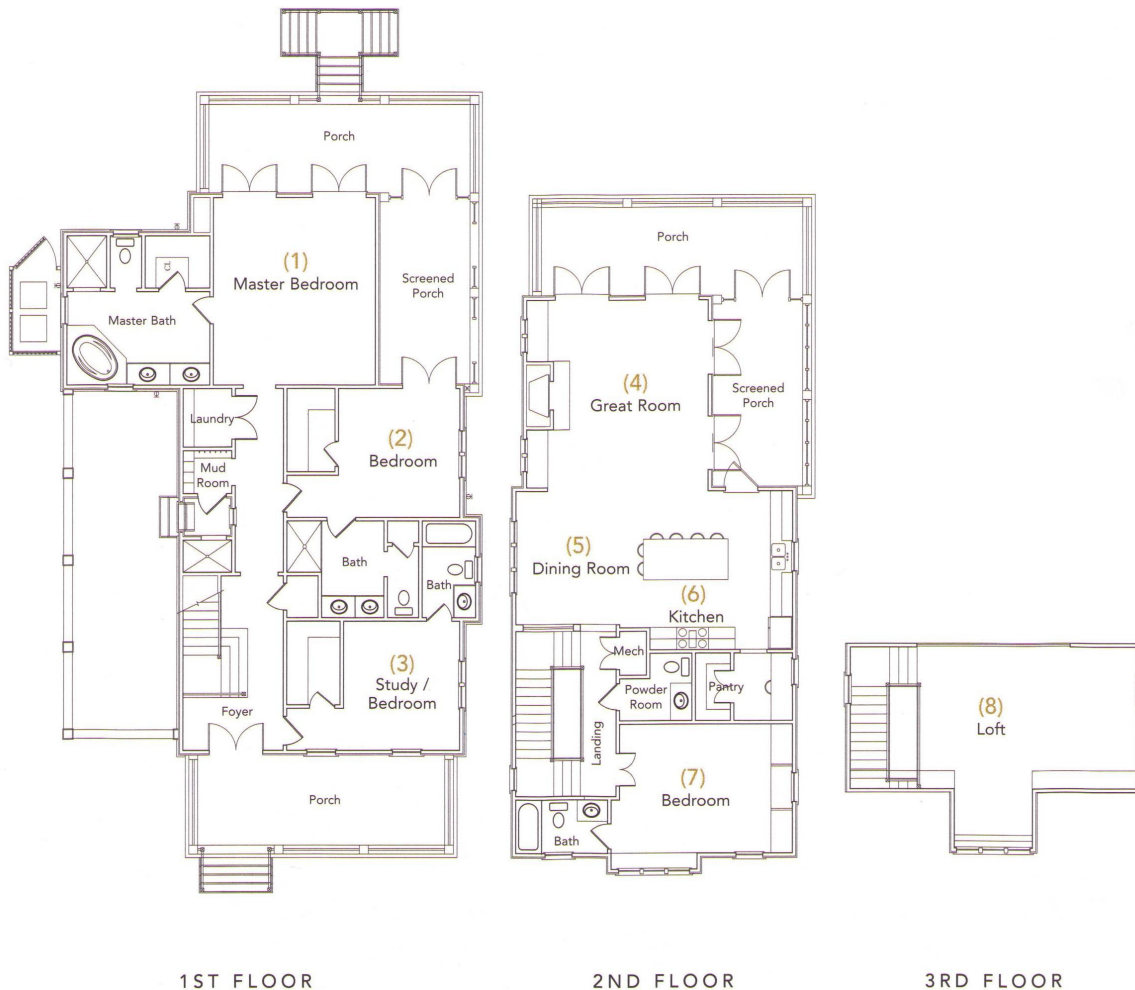
Architect: T. S. Adams Studio

Illustrations only and may differ from final improvements.

Room size and square footage are approximate.

Information believed to be accurate, but not warranted,

Subject to error, change and withdrawal without notice.



Michael McKelvie Homes, LLC

174 WaterColor Way Suite 333
Santa Rosa Beach, FL 32459

Phone: (850) 699-6429

www.michaelmckelviehomes.com
Info@michaelmckelviehomes.com

Efax: (866) 424-9032

*Specializing in Spectacular
Custom Homes*