

Keylime: 3 Bedroom, 4 Baths, 2 Stories

Rear Entry Floor Plan w/ Open floor plan

Level 1 Square footage:

1472 Conditioned Area

728 Porches

Level 2 Square Footage

1398 Conditioned Area

304 Porches

Total Conditioned Area: 2870

Total Porches: 1032

Total: 3902

Architect: T. S. Adams Studio



Michael McKelvie Homes, LLC

174 WaterColor Way Suite 333
Santa Rosa Beach, FL 32459

Phone: (850) 699-6429

www.michaelmckelviehomes.com
Info@michaelmckelviehomes.com

Efax: (866) 424-9032

*Specializing in Spectacular
Custom Homes*

Keylime: 3 Bedroom, 4 Baths, 2 Stories

First Floor Dimensions:

Dining Room: 11' 4" x 17' 6"

Great Room: 19' 10" x 17' 6"

Kitchen: 14' x 11' 4"

Sunroom/Media Room: 12' x 12' 4"

Second Floor Dimensions:

Master Bedroom: 12' 8" x 18'

Front Bedroom: 12' 8" x 12' 3"

Rear Bedroom: 12' 8" x 18'

Dining Room: 16' x 10' 9"

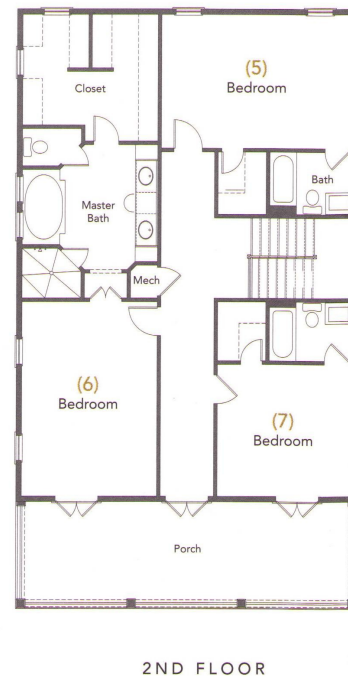
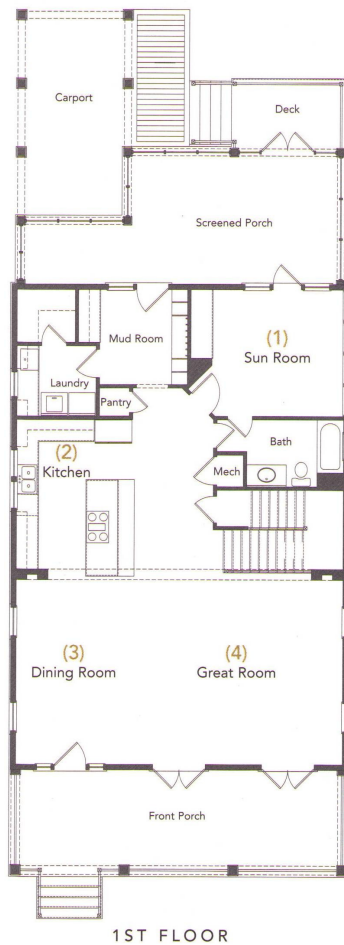
Architect: T. S. Adams Studio

Illustrations only and may differ from final improvements.

Room Size and square footage are approximate.

Information believed to be accurate, but not warranted,

Subject to error, change and withdrawal without notice.



Michael McKelvie Homes, LLC

174 WaterColor Way Suite 333
Santa Rosa Beach, FL 32459

Phone: (850) 699-6429

www.michaelmckelviehomes.com
Info@michaelmckelviehomes.com

Efax: (866) 424-9032

*Specializing in Spectacular
Custom Homes*